

• •
• • • ,
-mail: clausven@mail.ru.

1978

(Johnson , 1978)

(, 1992) ,

(Benjamin, Feir, 1967.)

(Tulin, Waseda, 1999)

1984)

(Elgar et al.,

(, 2007)

3766

2005 -2006

7 -15

0.25 ,

470 -500

6 15

:

()

0.1

2.22

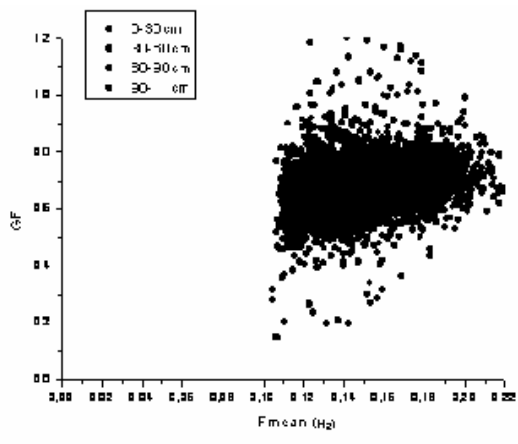
X -

, L -

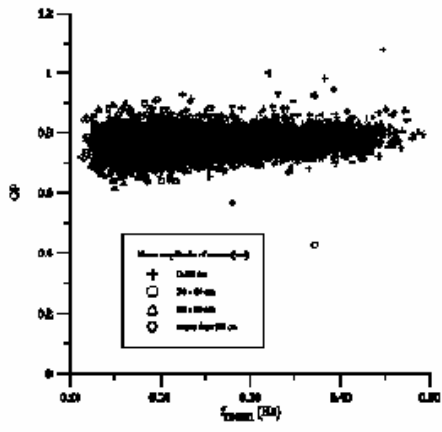
, H(t) -

$$H_e(t) = \sqrt{\{L[H(t)]\}^2 + [X\{L[H(t)]\}]^2}$$

$GF = 1,41 S_{He} / H_m$, $H_m -$, $S_{He} -$, GF , NW , (\bar{f}_e) , (\bar{f}) , $m_i = \int_0^{\infty} f^i S(f) df$, S , GF , NW

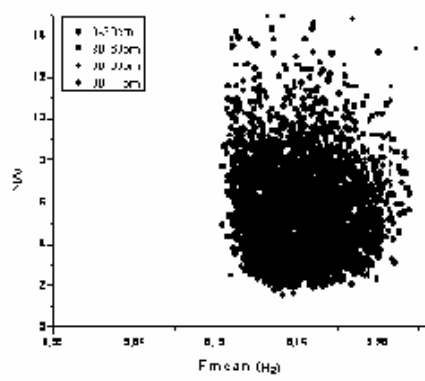


1.

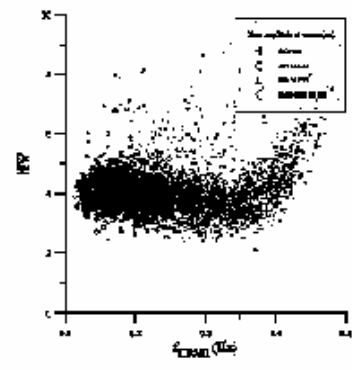


() - 0.67, () -

0.76.



2.



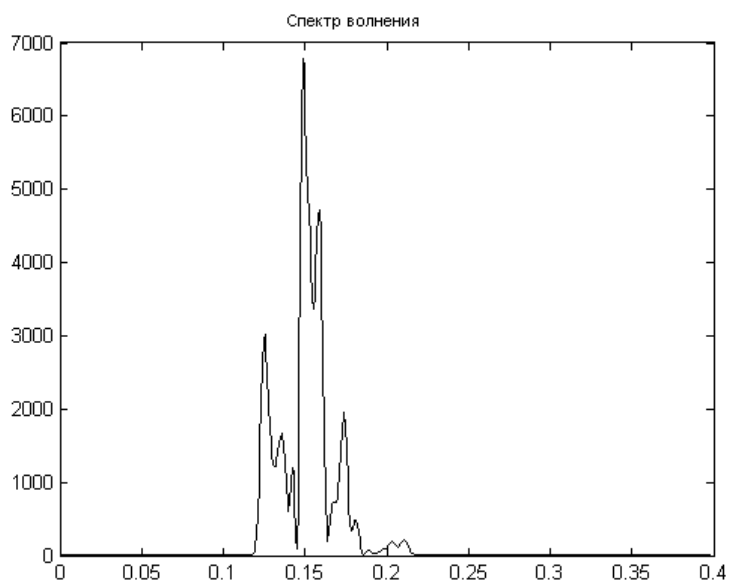
() - () - 4.

72

GF NW

72

. 3.



. 3.

76

« »

)

08 -05-00648- ,

, 7, 2007, . 48 -51.

. // ..

- Benjamin T.B. and Feir J.E. The disintegration of wave trains on deep water, Part 1. Theory. *J. Fluid Mech.* 1967, 27: pp. 417-430.
- Elgar S., R.T. Guza, R.J. Seymour, 1984. Groups of waves in shallow water. *J. Geophys. Res.*, V.89, N.C3. P. 3623-3634.
- Johnson R.R., Mansard E.P.D. and Plog J. Effects of wave grouping on breakwater stability. – *Proc 16th Coastal Eng. 1978 Conf.* pp. 2228-2243.
- Tulin M.P., Waseda T., 1999. Laboratory observations of wave group evolution, including breaking effects. *J. of Fluid Mech.* V.378. P.197-232.