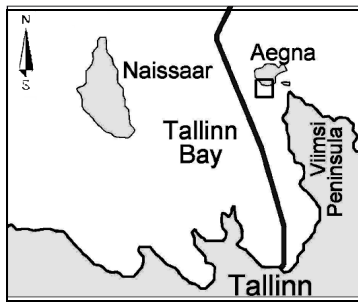


e-mail: D.Kurennoy@gmail.com

(Parnell and Kofoed-Hansen, 2001; Parnell et al., 2007; Soomere, 2005; Parnell et al., 2008; Torsvik et al., 2008; Kurennoy et al., 2009).

(Parnell and Kofoed-Hansen, 2001; Begovic et al., 2006).



2008
(High-Speed Craft)
SuperSeaCat Nordic Jet/Baltic Jet,
~35 ;
(High-Speed Ferry) Star,
SuperStar, Superfast Viking XPRS, 25–27,5
22–25 (Parnell et al., 2008).

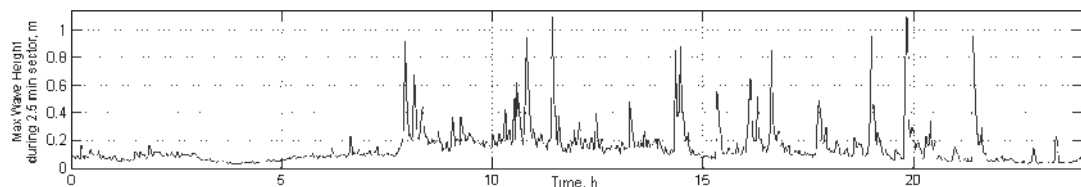
.1. 21 20 2008

() ,

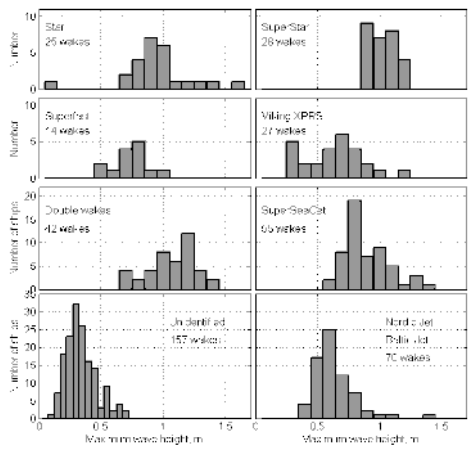
2700 500 2.7 , 100
(Parnell et al., 2008).

418

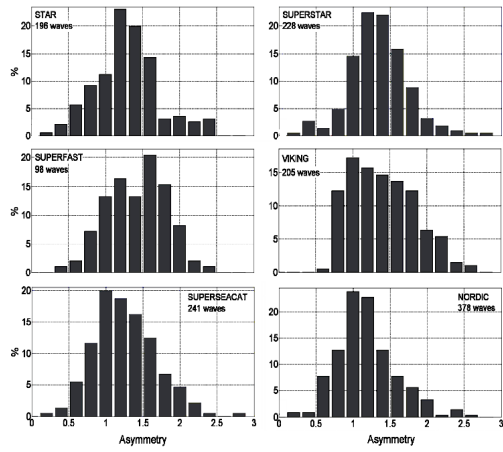
219 , 42 « » ()
) 157 « » () .



. 2. 2.5 - 08 2008.



.3.



.4.

2
>20
1
1.5
0.5-0.7
3
() ()

1.7
3. « »

1346 163
4. 1.4.

1.5-1.7 ,
(HSC).

Begovic, E.; Benassai, G.; Nocerino, E., and Scamardella, A., 2006. Field investigation of wake wash generated by HSC in the Bay of Naples. 2nd International Conference on Marine Research and Transportation (Ischia, Naples, 28–30 June 2007), University of Naples “Federico II”, 243–252.

Kurennoy, D.; Soomere, T., and Parnell, K.E., 2009. Variability in the properties of wakes generated by high-speed ferries. *J. Coastal Res.*, SI 56 (I), 519–523.

Parnell, K.E.; Delpeche, N.; Didenkulova, I.; Dolphin, T.; Erm, A.; Kask, A.; Kelpšaitė, L.; Kurennoy, D.; Quak, E.; Räämet, A.; Soomere, T.; Terentjeva, A.; Torsvik, T., and Zaitseva - Pärnaste, I., 2008. Far-field vessel wakes in Tallinn Bay. *Estonian J. Eng.*, 14 (4), 273–302.

Parnell, K.E. and Kofoed-Hansen, H., 2001. Wakes from large high-speed ferries in confined coastal waters: Management approaches with examples from New Zealand and Denmark. *Coastal Manage*, 29 (3), 217–237.

Parnell, K.E.; McDonald, S.C., and Burke, A.E., 2007. Shoreline effects of vessel wakes, Marlborough Sounds, New Zealand. *J. Coastal Res.*, SI 50, 502–506.

Soomere, T., 2005. Fast ferry traffic as a qualitatively new forcing factor of environmental processes in non-tidal sea areas: a case study in Tallinn Bay, Baltic Sea. *Environ. Fluid Mech.*, 5, 293–323.

Torsvik, T. and Soomere, T., 2008. Simulation of patterns of wakes from high-speed ferries in Tallinn Bay. *Estonian J. Eng.*, 14 (3), 232–254.