

E-mail: inga.zaitseva@gmail.com

(BACC, 2008).

(Orviku et al., 2003).
1999

(Kahma et al., 2003)
2008)

2005 (Soomere et al.,

KNMI/ERA-40 (1957–2002, Sterl and Caires, 2005)

6- $1.5^{\circ} \times 1.5^{\circ}$.

1970-

1996, (. 1).
30 –

1978–2003

(Mårtensson, 1987).

19°08 , . 1)

(, 59°09 ,
(Broman et al. 2006).



. 1.

(c)
)

200

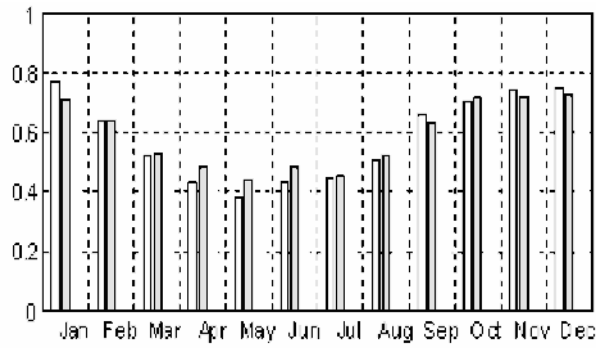
1954

2005)

(1954–1985).

(. 1):

(1954 –



.2.

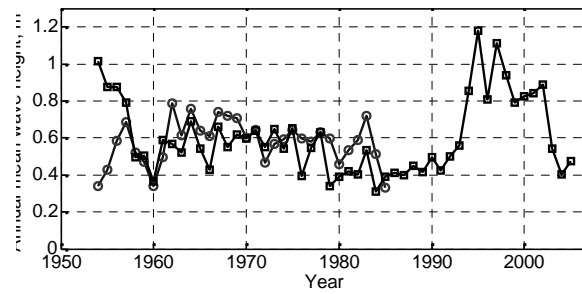
().

()

-2-4 .

4-6

(. 2).



.3.

().

()

3

15-20

(1-2%)

1990-

1997

(Broman et al., 2006).

(Soomere, Zaitseva, 2007).

:

The BACC Author Team, 2008. Assessment of Climate Change for the Baltic Sea Basin. Springer, Berlin, Heidelberg, 473 pp.

Broman, B.; Hammarklint, T.; Rannat, K.; Soomere, T., and Valdmann, A., 2006. Trends and extremes of wave fields in the north-eastern part of the Baltic Proper. *Oceanologia*, 48 (S), 165 – 184.

Kahma, K., Pettersson, H. and Tuomi, L. Scatter diagram wave statistics from the northern Baltic Sea. MERI – Report Series of the Finnish Institute of Marine Research, 2003, 49, 15 –32.

Mårtensson, N. and Bergdahl, L. On the wave climate of the Southern Baltic. Report Series A:15, Department of Hydraulics, Chalmers University of Technology, Göteborg, 1987.

Orviku, K., Jaagus, J., Kont, A., Ratas, U. and Rivas, R. Increasing activity of coastal processes associated with climate change in Estonia. *J. Coastal Res.*, 2003, 19, 364–375.

Soomere, T. Wind wave statistics in Tallinn Bay. *Boreal Env. Res.*, 2005, 10, 103 –118.

Soomere, T.; Behrens A.; Tuomi L., and Nielsen J.W., 2008. Wave conditions in the Baltic Proper and in the Gulf of Finland during windstorm Gudrun. *Natural Hazards and Earth System Sciences*, 8 (1), 37–46.

Sterl, A. and Caires, S. Climatology, variability and extrema of ocean waves – the web-based KNMI/ERA-40 wave atlas. *Int. J. Climatol.*, 2005, 25, 7, 963 –977.

Zaitseva-Pärnaste, I., Suursaar, Ü, Kullas, T., Lapimaa, S., and Soomere, T., 2009. Seasonal and long-term variations of wave conditions in the northern Baltic Sea. *Journal of Coastal Research*, SI 56, vol. 1, 277-281. Lisbon, Portugal, ISBN.