

( . )

..

, .

«

( .

)»

,

. . ,

.

In article «Modelling costal protecting constructions for creation of artificial territories at coast of the Kaliningrad area (on an example of of Zelenogradsk)» is considered a site of coast of Baltic sea on which it is supposed to execute reconstruction coast strengthening. Some variants of constructions are developed for quay reconstruction. Besides, for complication of a contour of a coastal line it is offered to arrange artificial capes on a number of sites. For all types of constructions mathematical modelling of their interaction with settlement waves is executed. Optimum design parameters for each construction are as a result defined and recommendations about designing are made.

( .1)

1200

«

».

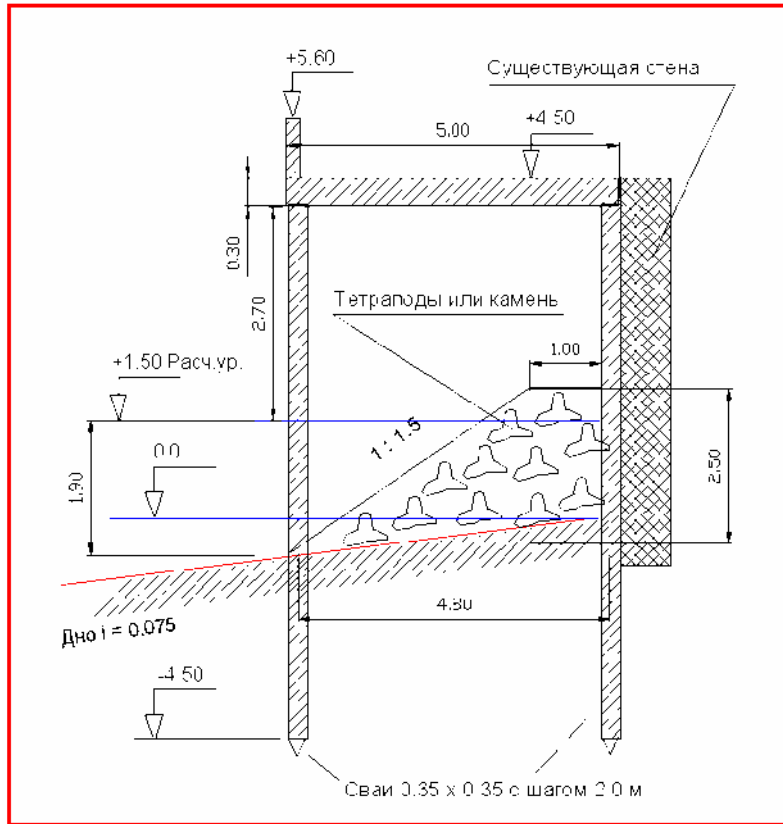


. 1.

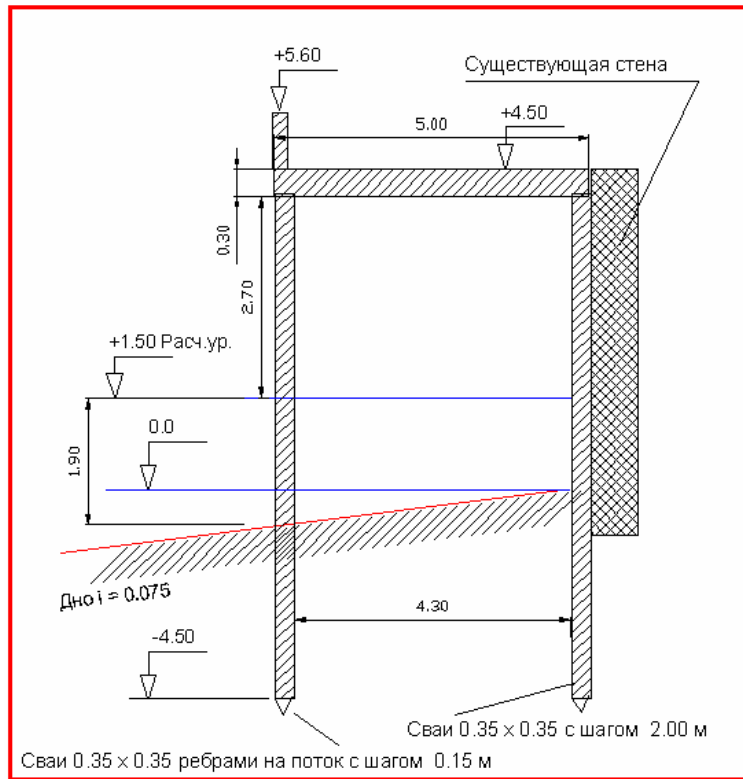
( )

( )

- / : ,  
 .  
 .  
 5.0 .  
 , .  
 - .  
 - .  
 - ( ) / .  
 15 - 17 , -  
 , -  
 .  
 .2 .  
 , ( .2 ): 2.5  
 , 4.8 , 1.0 , ( .2 ): ( 2.5  
 0.45) 4.0 3/ .  
 ( , ). 1.9 ,  
 0.60 .  
 0.20,  
 0.15 ( .2 ).  
 0.5 .  
 ( .3 ): 2.0 ,  
 4.0 , 1.0 , ( 0.45)  
 2.75 3/ .  
 1.2 ,  
 0.40 .



. 2 .



. 2 .

0.20

0.15

0.50

0.83

0.17 ( 0.3 ).

0.41 ,

0.09 .

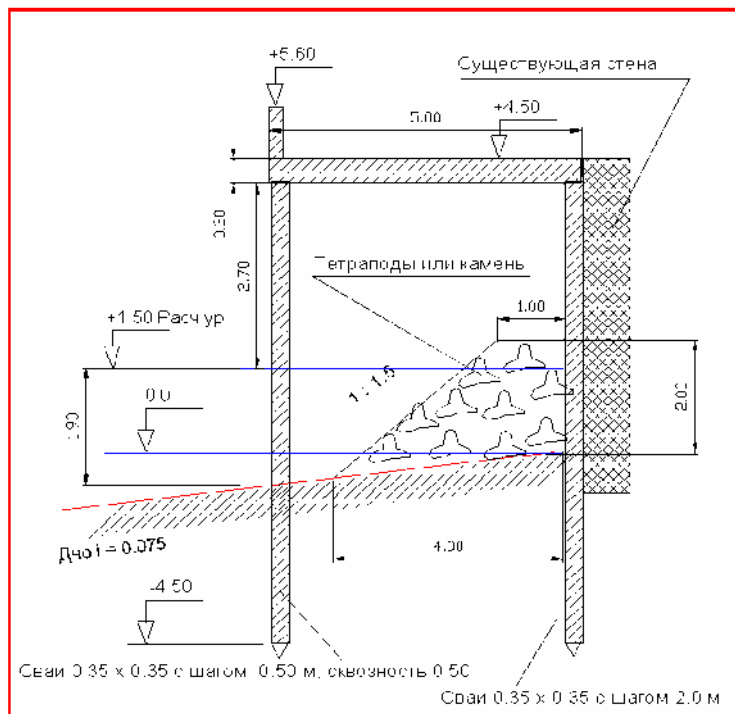
0.62 ,

0.50 .

100 – 120

( 0.4 ).

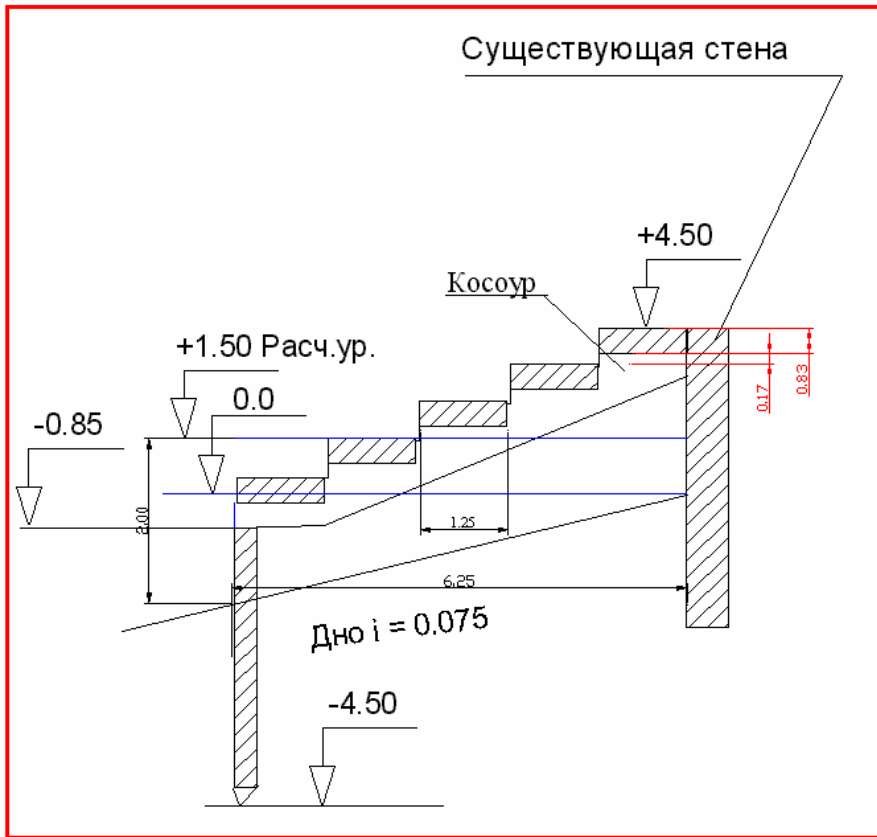
1.0



.3 .

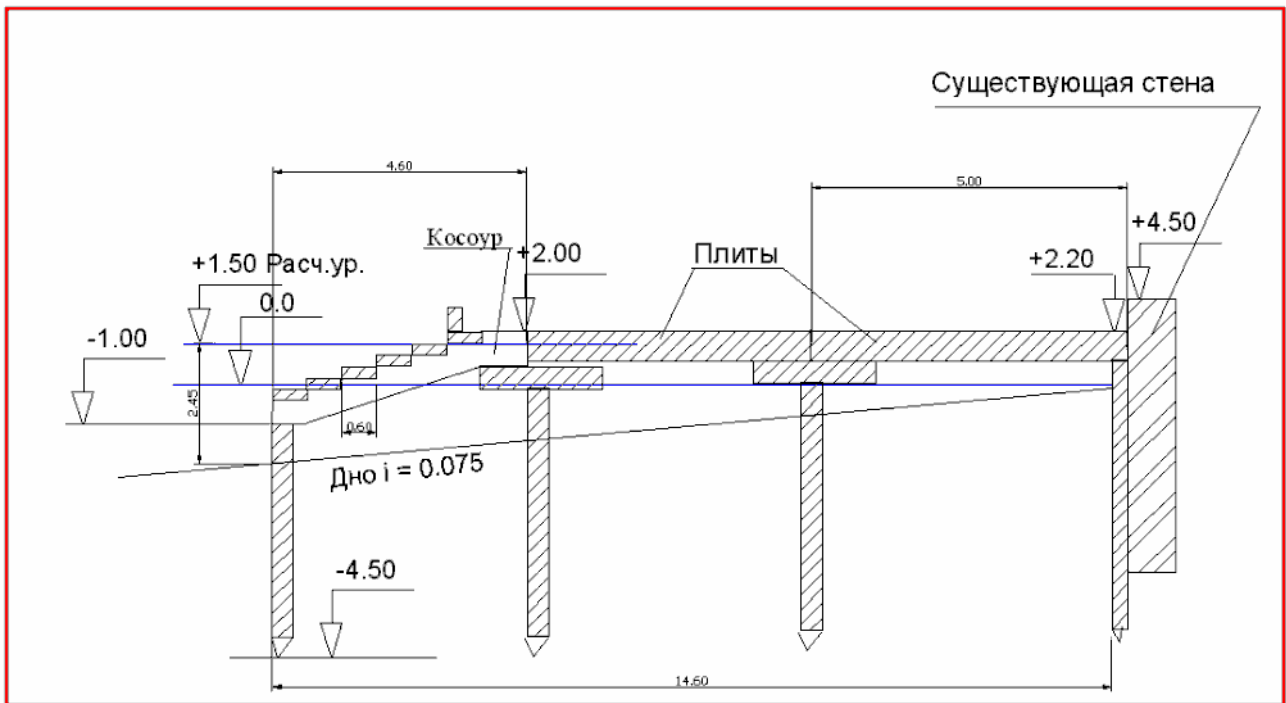
0.50

0.50



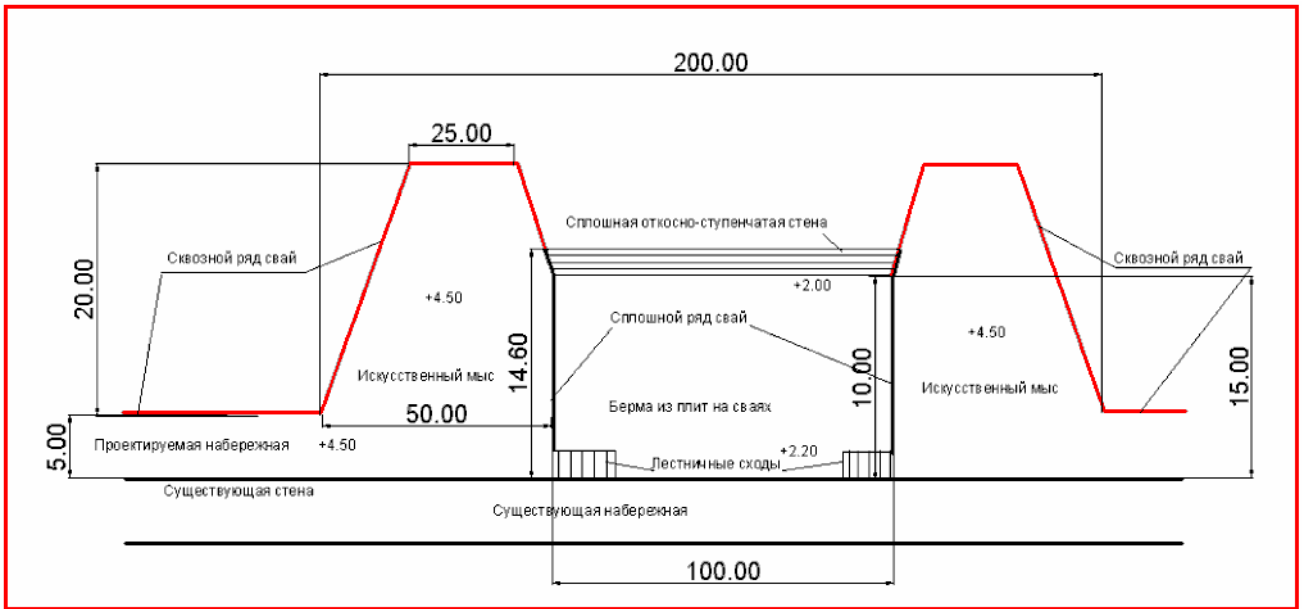
. 3 .

0.17



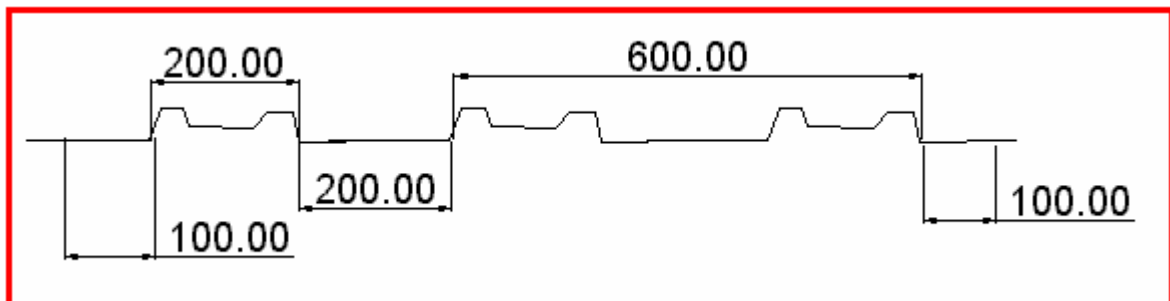
. 4 .

— . 5 .



. 5.

200 .  
 :  
 - :  
 ( - ) 50 20.0 25 .  
 , ( ,  
 0.20 ).  
 « »  
 , .  
 - , 200 .  
 . 6.



. 6 .

30%

$$d = 0.0003 \quad (0.3 \quad ).$$

$$i = 0.075,$$